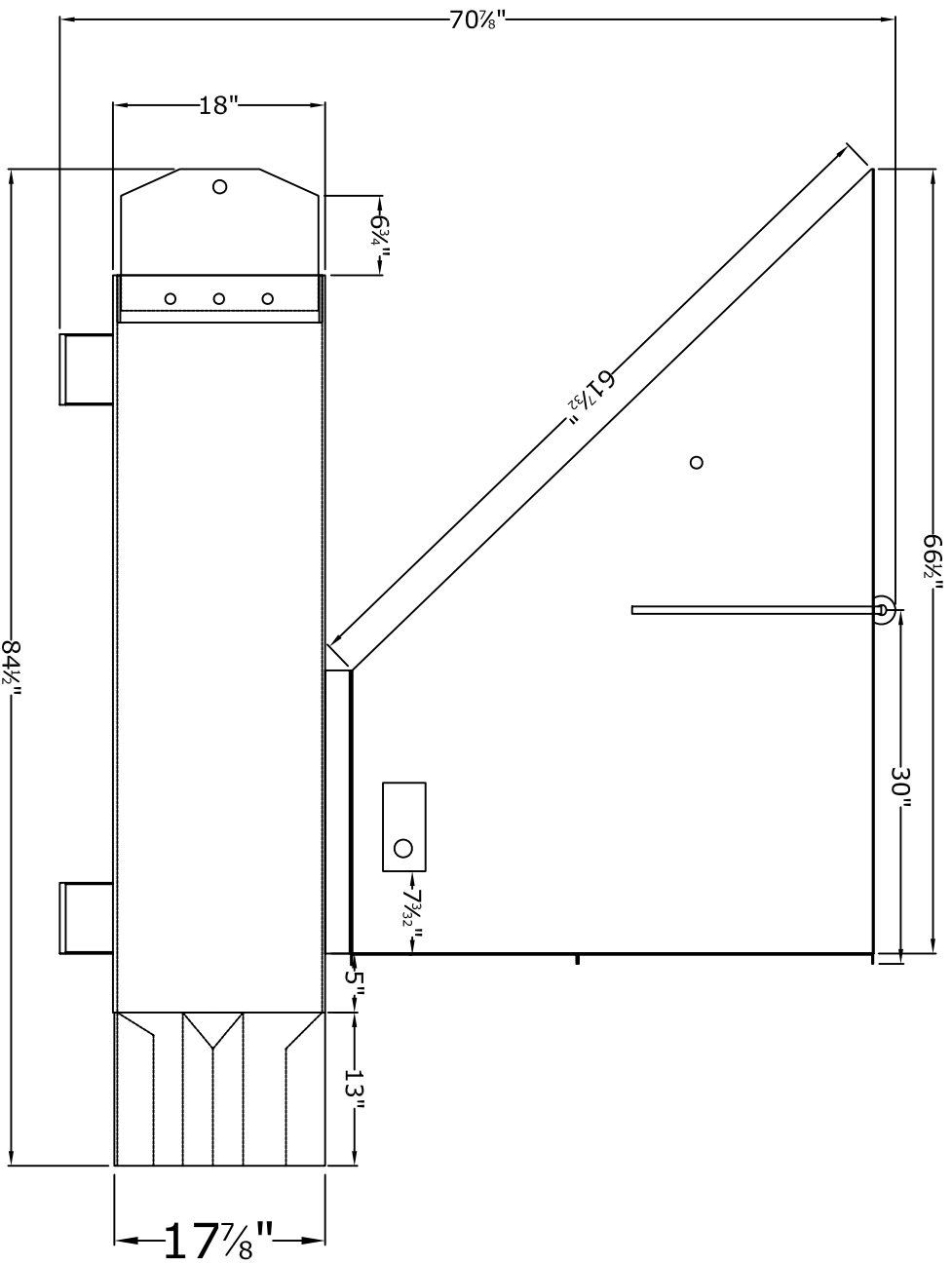
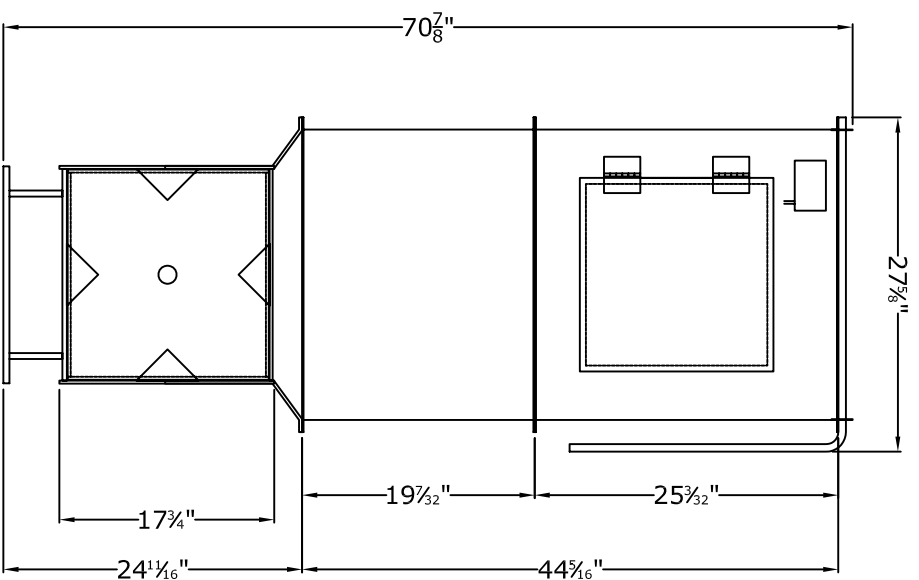


# SIDE VIEW



# FRONT VIEW



THIS DRAWING IS THE PROPERTY OF WILKINSON-HI-RISE. IT IS LOANED ON THE CONDITION THAT IT IS NOT TO BE REPRODUCED, COPIED OR OTHERWISE DISPOSED OF, AND IS NOT TO BE USED IN PART TO FURNISH INFORMATION FOR THE MAKING OF DRAWINGS, PRINTS, OR PARTS THEREOF. THE ACCEPTANCE OF THIS DRAWING IS AN ACCEPTANCE OF THE FOREGOING CONDITIONS AND THE RECOGNITION OF THE EXCLUSIVE OWNERSHIP IN AND TO THE DRAWINGS AS THE PROPERTY OF WILKINSON-HI-RISE.



**WILKINSON-HI-RISE**

2321 Evans Street  
Hollywood, FL 33020  
Tel: 800 231 3888, fax: 954 342 43 38.

DWG. **5448 NTS** **5448** **1** OF **1**

UNLESS OTHERWISE SPECIFIED:  
DIMENSIONS ARE IN INCHES  
FRACTIONAL DIMENSIONS ±1/32"  
DECIMAL DIMENSIONS ±.010"  
ANGULARITY ±1°  
MACHINED SURFACES  $\sqrt{250}$

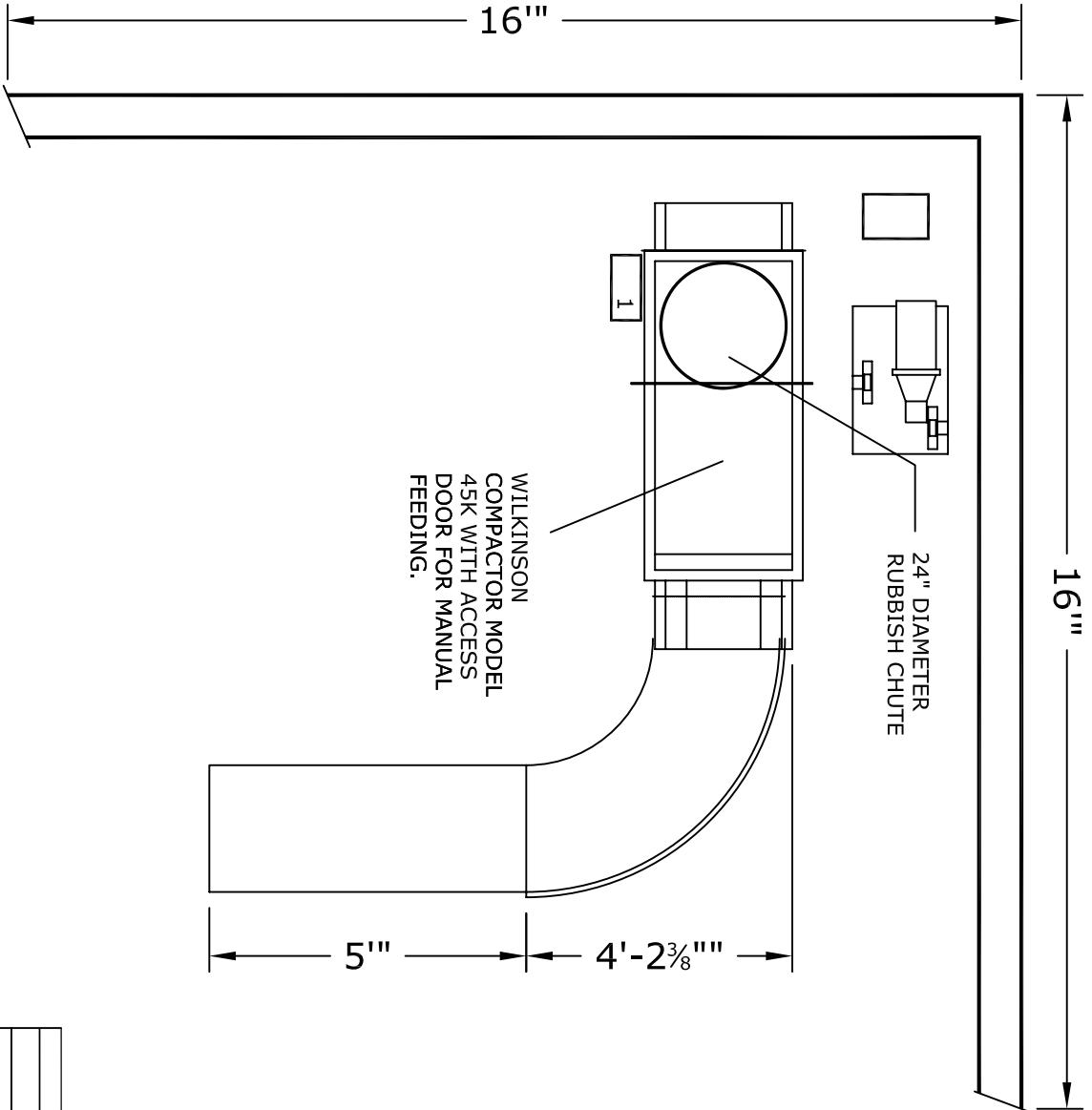
**45K COMPACTOR**

DRAWING NAME: VIEWS

DRAWING #:

**XXXXX**

DESCRIPTION	REV.	DATE	INIT.
FIRST DRAWING	A	10/17/09	CJS



THIS DRAWING IS THE PROPERTY OF WILKINSON HI-RISE. IT IS LOANED ON THE CONDITION THAT IT IS NOT TO BE REPRODUCED, COPIED OR OTHERWISE DISPOSED OF, AND IS NOT TO BE USED IN PART TO FURNISH INFORMATION FOR THE MAKING OF DRAWINGS, PRINTS, OR PARTS THEREOF. THE ACCEPTANCE OF THIS DRAWING IS AN ACCEPTANCE OF THE FOREGOING CONDITIONS AND THE RECOGNITION OF THE EXCLUSIVE OWNERSHIP IN AND TO THE DRAWINGS AS THE PROPERTY OF WILKINSON HI-RISE.



**WILKINSON-HI-RISE**

2321 Evans Street  
 Hollywood, FL 33020  
 Tel: 800 231 3888, fax: 954 342 43 38.

DWG. **scale** NTS **sheet** 1 OF 1

UNLESS OTHERWISE SPECIFIED:  
 DIMENSIONS ARE IN INCHES  
 FRACTIONAL DIMENSIONS ± 1/32"  
 DECIMAL DIMENSIONS ± .010"  
 ANGULARITY ± 1°  
 MACHINED SURFACES  $\sqrt{250}$

**45K COMPACTOR**

DRAWING NAME: TYPICAL LAY OUT

DRAWING #: XXXXX

DESCRIPTION	REV.	DATE	INIT.
FIRST DRAWING	A	10/17/09	CJS

## SPECIFICATIONS

### Compactor Model 45 KN

Chamber Capacity	0.26 cu. Yds
Cycle Time	28 seconds
Displacement per hour	33 cu. Yds
Ram face Pressure (N)	38 psi
Ram face Pressure (M)	51 psi
Packing Force (N)	20,160 lbs
Packing Force (M)	27,720 lbs
Top opening	59"L x 30"W
Chamber Opening	17 1/2"L x 16 3/4"W
Ram Height	16 5/8"
Overall Dimensions	79"L x 28"W x 69"H
Weight w/power pack	1700 lbs

## STRUCTURAL

Floor	AR 3/8" Plate
Main Frame & Hopper	1/4" & 13 ga Plate

## HYDRAULIC

Power Unit	Remote
Cylinder	4" Bore, 2" Rod
Pump	5 GPM
Oil Tank	15 Gals

## ELECTRICAL

Motor	5HP, 1800 RPM 208/220/440 V, 3PH,
Motor Power	60Hz
Circuits Controls	115 VAC, 24 VDC
Monitors	80% and 100% Full
Enclosures	Nema 12
Standard Features	photo-eye w/timer Door Safety