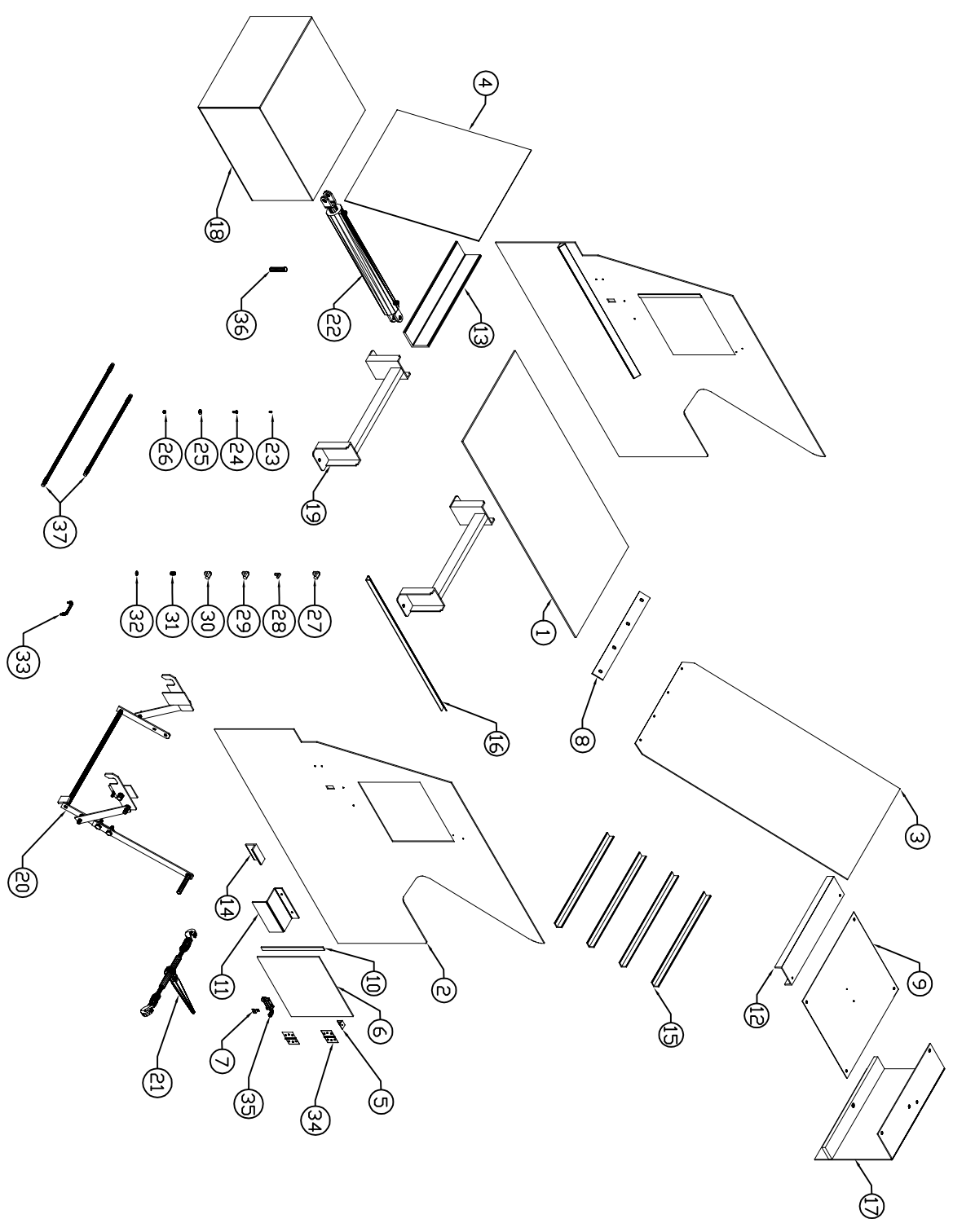



This Drawing is the property of WILKINSON-HI-RISE. It is loaned on the condition that it is not to be reproduced, copied or otherwise disposed of, and is not to be used in part to furnish information for the making of drawings, prints, or parts here of, the acceptance of the foregoing conditions and the recognition of the exclusive ownership in and to the drawings as the property of WILKINSON-HI-RISE.



REV.	DATE	INIT.
A	4/21/10	AAM

MATERIAL: SEE BILL OF MATERIALS		UNLESS OTHERWISE SPECIFIED, DIMENSIONS ARE IN INCHES TOLERANCES: FRACTIONS: ±1/32" ANGULAR: ±1°		 WILKINSON-HI-RISE 2321 Evans Street Hollywood, FL 33020 Tel: 800 231 3888 Fax: 954 342 43 38	
FINISH: PAINTED COLOR TURBOUISE	DRAWN: CHECKED: APPROVED:	APPROVALS: AAM	DATE: 4/21/10	TITLE: 600-C5 COMPACTOR	DWG: COM-600-000
				SCALE: NTS	SHEET: 1 OF 2

This Drawing is the property of WILKINSON-HI-RISE. It is loaned on the condition that it is not to be reproduced, copied or otherwise disposed for, and is not to be used in part to furnish information for the making of drawings, prints, or parts here of, the accomplishment of the foregoing conditions and the recognition of the exclusive ownership in and to the drawings as the property of WILKINSON-HI-RISE.

DESCRIPTION	REV.	DATE	INT.
FIRST DRAWING	A	4/21/10	AAM


BILL OF MATERIAL

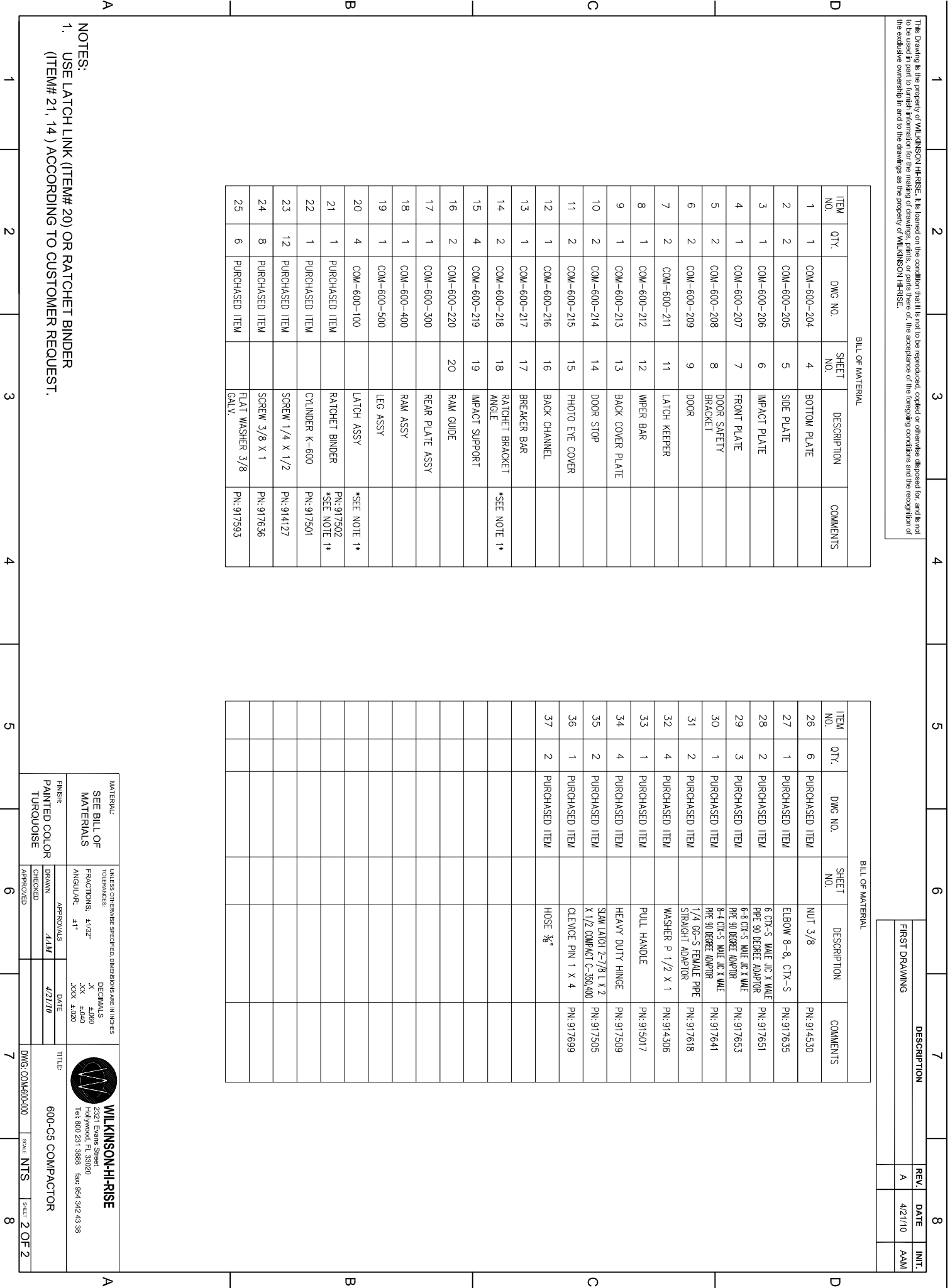
ITEM NO.	QTY.	DWG. NO.	SHEET NO.	DESCRIPTION	COMMENTS
1	1	COM-600-204	4	BOTTOM PLATE	
2	2	COM-600-205	5	SIDE PLATE	
3	1	COM-600-206	6	IMPACT PLATE	
4	1	COM-600-207	7	FRONT PLATE	
5	2	COM-600-208	8	DOOR SAFETY BRACKET	
6	2	COM-600-209	9	DOOR	
7	2	COM-600-211	11	LATCH KEEPER	
8	1	COM-600-212	12	WIPER BAR	
9	1	COM-600-213	13	BACK COVER PLATE	
10	2	COM-600-214	14	DOOR STOP	
11	2	COM-600-215	15	PHOTO EYE COVER	
12	1	COM-600-216	16	BACK CHANNEL	
13	1	COM-600-217	17	BREAKER BAR	
14	2	COM-600-218	18	RATCHET BRACKET ANGLE	*SEE NOTE 1*
15	4	COM-600-219	19	IMPACT SUPPORT	
16	2	COM-600-220	20	RAM GUIDE	
17	1	COM-600-300		REAR PLATE ASSY	
18	1	COM-600-400		RAM ASSY	
19	1	COM-600-500		LEG ASSY	
20	4	COM-600-100		LATCH ASSY	*SEE NOTE 1*
21	1	PURCHASED ITEM		RATCHET BINDER	PN: 917502
22	1	PURCHASED ITEM		CYLINDER K-600	PN: 917501
23	12	PURCHASED ITEM		SCREW 1/4 X 1/2	PN: 914127
24	8	PURCHASED ITEM		SCREW 3/8 X 1	PN: 917636
25	6	PURCHASED ITEM		FLAT WASHER 3/8 GALV.	PN: 917593

BILL OF MATERIAL

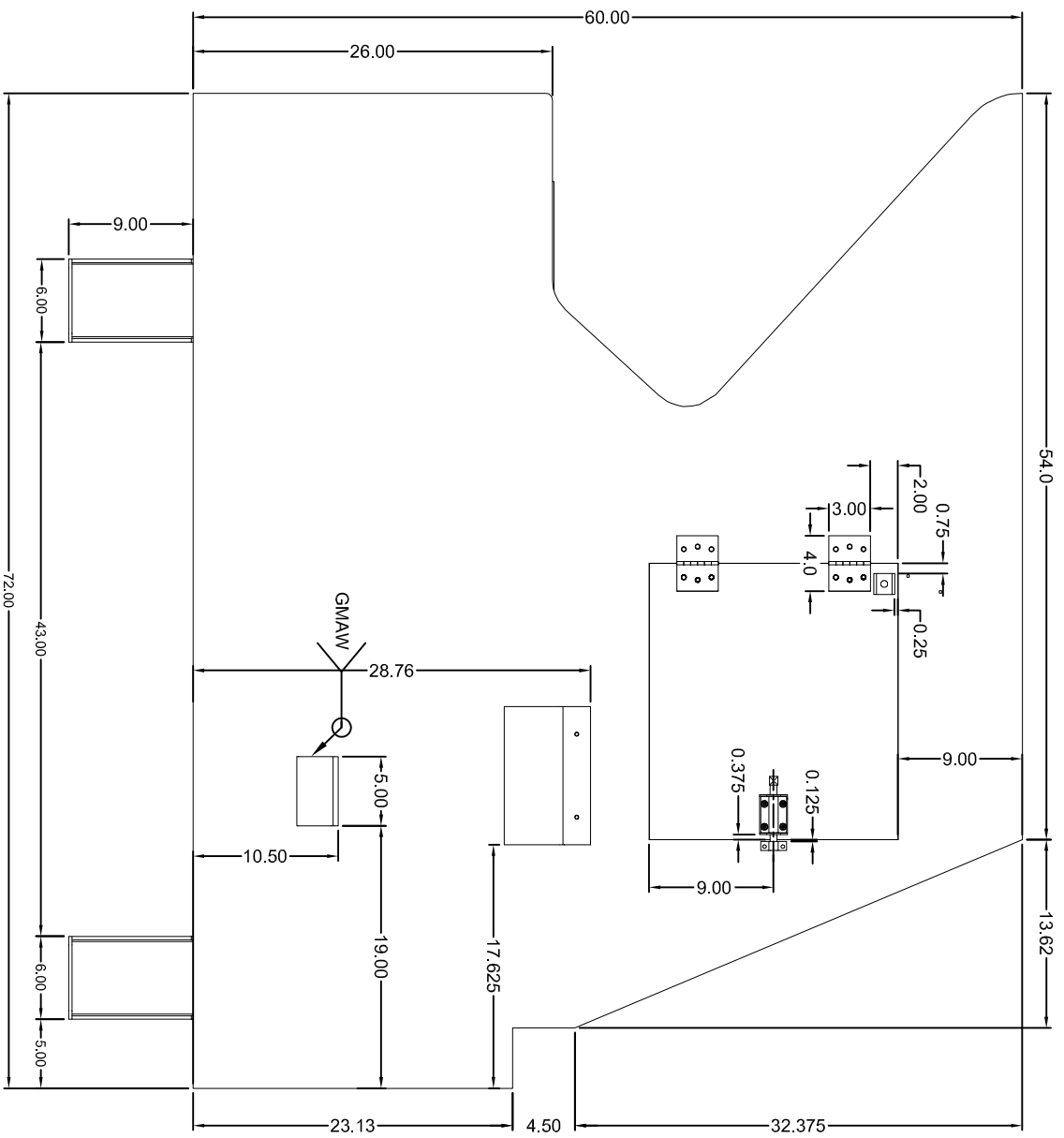
ITEM NO.	QTY.	DWG. NO.	SHEET NO.	DESCRIPTION	COMMENTS
26	6	PURCHASED ITEM		NUIT 3/8	PN: 914530
27	1	PURCHASED ITEM		ELBOW 8-8, CTX-S	PN: 917635
28	2	PURCHASED ITEM		6 CTX-S MALE MC X MALE PPE 90 DEGREE ADAPTOR	PN: 917651
29	3	PURCHASED ITEM		6-8 CTX-S MALE MC X MALE PPE 90 DEGREE ADAPTOR	PN: 917653
30	1	PURCHASED ITEM		8-4 CTX-S MALE MC X MALE PPE 90 DEGREE ADAPTOR	PN: 917641
31	2	PURCHASED ITEM		1/4 GS-S FEMALE PIPE STRAIGHT ADAPTOR	PN: 917618
32	4	PURCHASED ITEM		WASHER P 1/2 X 1	PN: 914306
33	1	PURCHASED ITEM		PULL HANDLE	PN: 915017
34	4	PURCHASED ITEM		HEAVY DUTY HINGE	PN: 917509
35	2	PURCHASED ITEM		SLAM LATCH 2-7/8 L X 2 X 1/2 COMPACT C-350/400	PN: 917505
36	1	PURCHASED ITEM		CLEVICE PIN 1 X 4	PN: 917699
37	2	PURCHASED ITEM		HOSE 3/8"	

NOTES:
1. USE LATCH LINK (ITEM# 20) OR RATCHET BINDER (ITEM# 21, 14) ACCORDING TO CUSTOMER REQUEST.

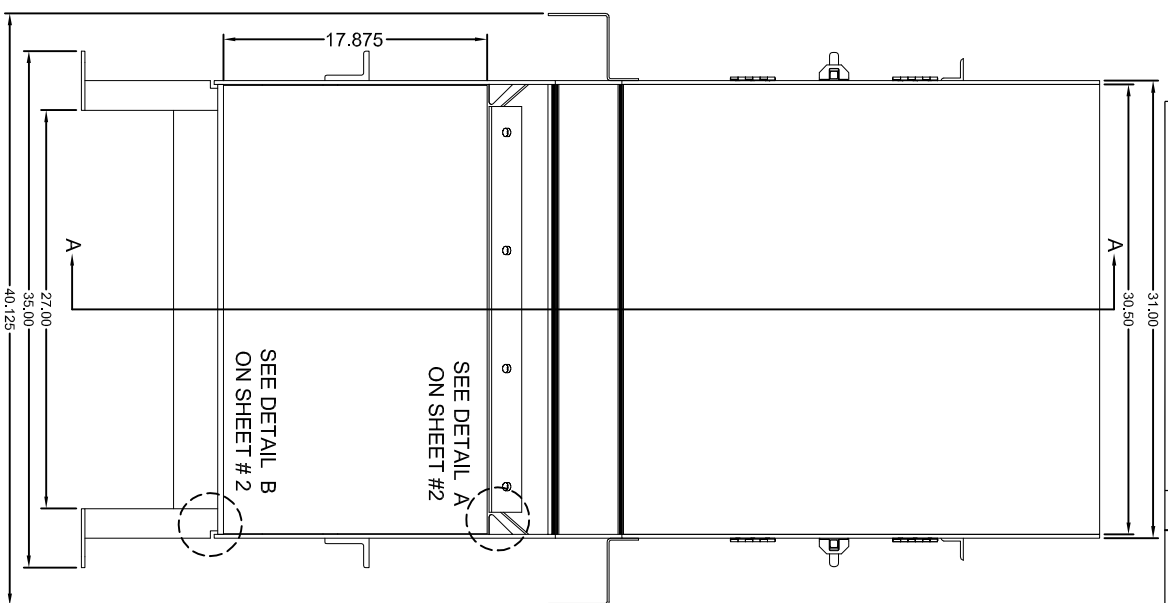
MATERIAL: SEE BILL OF MATERIALS	UNLESS OTHERWISE SPECIFIED, DIMENSIONS ARE IN INCHES TOLERANCES: FRACTIONS: ±1/32" ANGULAR: ±1°	DECIMALS X .000 XX .000 XXX .000	 WILKINSON-HI-RISE 2321 Evans Street Hollywood, FL 33020 Tel: 800 231 3888 fax: 954 342 43 38
FINISH: PAINTED COLOR TURBOUISE	APPROVALS: DRAWN: <u>AAH</u> CHECKED: _____ APPROVED: _____	DATE: <u>4/21/10</u>	
TITLE: 600-C5 COMPACTOR		DWG. COM-600-000	SCALE: NTS



This Drawing is the property of WILKINSON-HI-RISE. It is loaned on the condition that it is not to be reproduced, copied or otherwise disposed for, and is not to be used in part to furnish information for the making of drawings, prints, or parts here for. The acceptance of the foregoing conditions and the recognition of the exclusive ownership in and to the drawings as the property of WILKINSON-HI-RISE.



SIDE VIEW



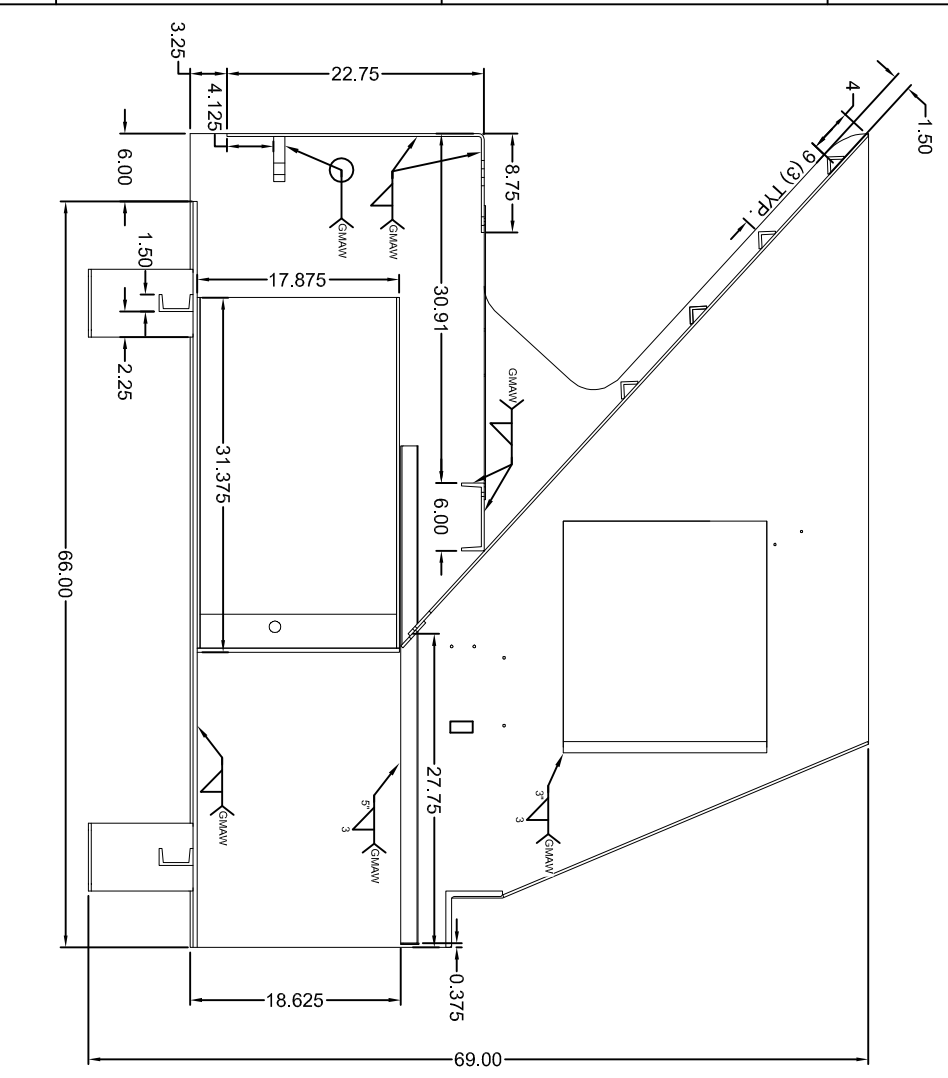
FRONT VIEW

DESCRIPTION	REV.	DATE	INT.
FIRST DRAWING	A	4/21/10	AAM

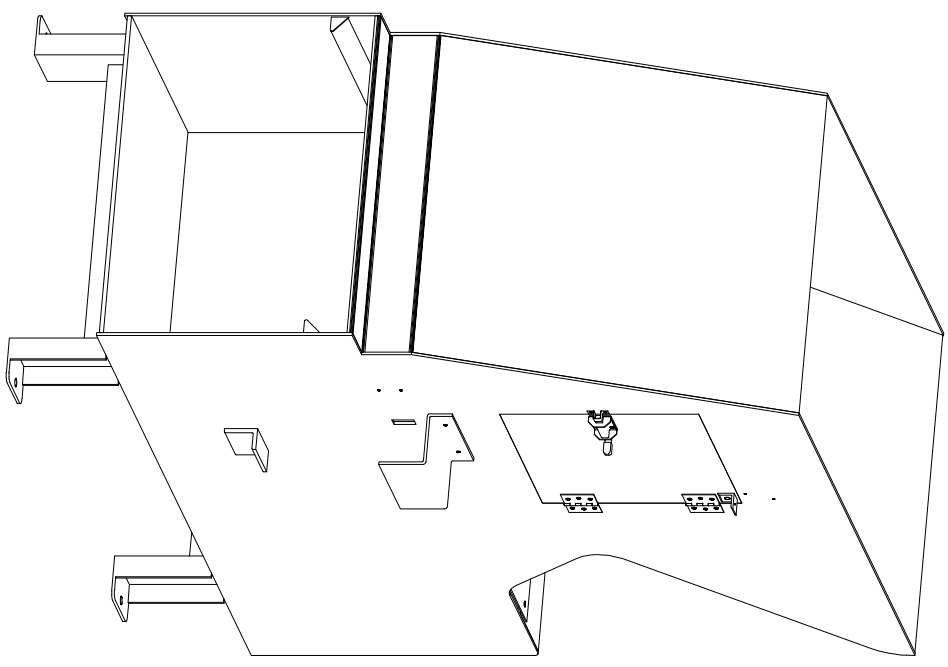
MATERIAL: SEE BILL OF MATERIALS		UNLESS OTHERWISE SPECIFIED, DIMENSIONS ARE IN INCHES.	
FINISH: PAINTED COLOR TURBOUISE		TOLERANCES: FRACTIONS: ±1/16" ANGULAR: ±1°	
DRAWN: AAM	APPROVALS: AAM	DECIMALS: X ±.050 XX ±.040 XXX ±.020	DATE: 4/21/10
TITLE: 600-C5 COMPACTOR, PLAN VIEWS		WILKINSON-HI-RISE 2321 Evans Street Hollywood, FL 33020 Tel: 800 231 3888 Fax: 954 342 43 38	
DWG: CON-600-201	SCALE: NTS	SHEET 1 OF 20	

This Drawing is the property of WILKINSON-HI-RISE. It is loaned on the condition that it is not to be reproduced, copied or otherwise disposed of, and is not to be used in part to furnish information for the making of drawings, prints, or parts here for. The acceptance of the foregoing conditions and the recognition of the exclusive ownership in and to the drawings as the property of WILKINSON-HI-RISE.


DESCRIPTION	REV.	DATE	INIT.
FIRST DRAWING	A	4/21/10	AAM



SECTION A-A



ISOMETRIC VIEW

MATERIAL: SEE BILL OF MATERIALS		UNLESS OTHERWISE SPECIFIED, DIMENSIONS ARE IN INCHES		 WILKINSON-HI-RISE 2321 Evans Street Hollywood, FL 33020 Tel: 800 231 3888 Fax: 954 342 43 38	
FINISH: PAINTED COLOR TURBOUISE	TOLERANCES: FRACTIONS: ±1/32" ANGULAR: ±1°	DECIMALS: X .060 XX .010 XXX .020	APPROVALS DRAWN: AAM CHECKED: AAM	DATE: 4/21/10	TITLE: 600-C5 COMPACTOR, PLAN VIEWS
DWG: COM-600-203			SCALE: NTS	SHEET: 3 OF 20	